

# Line pressure regulator HP 350

- single stage for high flow and high outlet pressure (up to 50bar) – with a balanced poppet



Fittings and gauges optional

## Description:

The line pressure regulator HP 350 is a single stage pressure regulator with a high flow rate and is developed for pressure reduction of high purity gases.

The HP 350 reduces the pressure of compressed gases or fluids to a maximum outlet pressure of 50 bar.

The integrated balanced poppet ensures that even when inlet pressure drops down, a constant operating pressure is guaranteed (dual stage effect).

## Application Area:

Especially for gases with high requirements on purity up to 6.0 and for laboratories and analytics. In case of our special cleaning method the cylinder pressure regulator is ECD capable.

## Technical Details:

Body:	stainless steel 1.4404 electro polished brass, nickel and matt chrome plated
Seat:	PCTFE
Diaphragm:	1.4435
Leakage rate:	$10^{-8}$ (mbar l/s) He
Gas purity:	$\leq 6.0$
Max. inlet pressure:	300 bar
Outlet pressure ranges:	0.1-1.7; 1-3.5; 1-7; 1-12; 1-17; 1-50 bar
Operating temp.:	-20°C to +70°C
Gauges:	safety version to EN 837-1 KL1,6
Size (WxHxD):	122 x 123 x 126 mm
Weight:	1750g

## Hornung Quality standard

The company Hornung is certified to **ISO 9001:2008** and **ISO 14001:2009**.

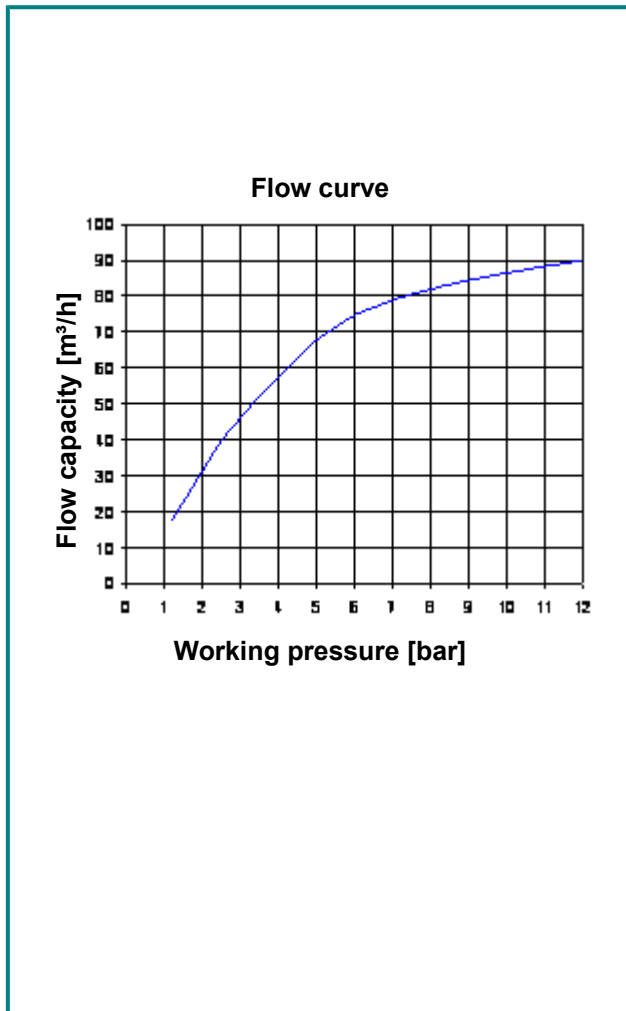
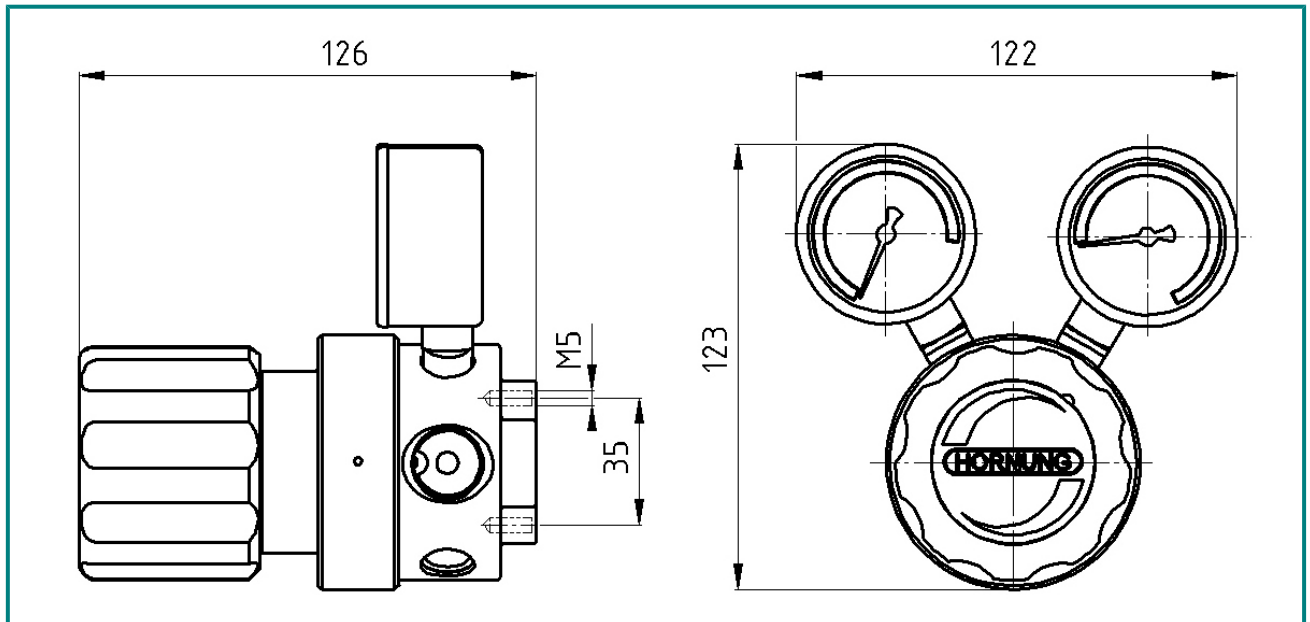
All single parts are manufactured, assembled and tested by in-house production.

The finished parts are therefore under the criteria of our German quality control system with 100% final inspection.

Hornung GmbH  
Rathenaustraße 55, 63263 Neu-Isenburg

Phone: +49 6102 7883-70  
Fax: +49 6102 7883-40

www.hornung.org  
info@hornung.org



**Accessories:**

See total catalogue segment

7. Accessories  
Gauges, screw connection

**Order Information:**

**Material:**

- 1 = stainless steel
- 2 = brass

**Flow direction:**

- 1 = left to right
- 2 = right to left

**Outlet pressure ranges:**

- 1 = 0.1 – 1.7 bar
- 2 = 1 – 3.5 bar
- 3 = 1 - 7 bar
- 4 = 1 - 12 bar
- 5 = 1 - 17 bar
- 6 = 1 - 50 bar

**Manometer:**

- 1 = without gauges
- 2 = with inlet and outlet pressure gauges

**Options for inlet and outlet:**

- 0 = NPT 3/8" f
- 1 = NPT 1/2" f
- 6 = compression fitting 6mm
- 8 = compression fitting 8mm
- 10 = compression fitting 10mm
- 12 = compression fitting 12mm
- 15 = compression fitting 15mm

<b>HP350-</b>	<b>2</b>	<b>3</b>	<b>2</b>	<b>1</b>	<b>6</b>	<b>Gas</b>
Type	Mat.	inlet	outlet	Mano.	Opt.	gastype